



A New Era of Wireless Security

# LightSYS Air

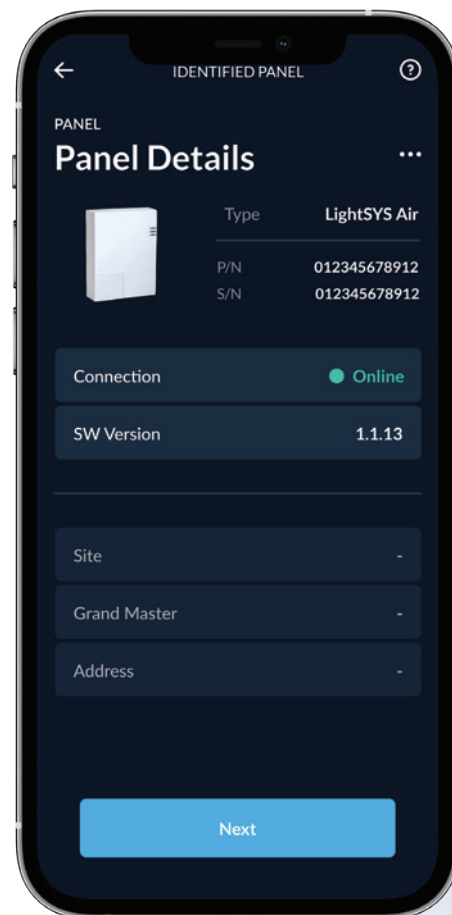
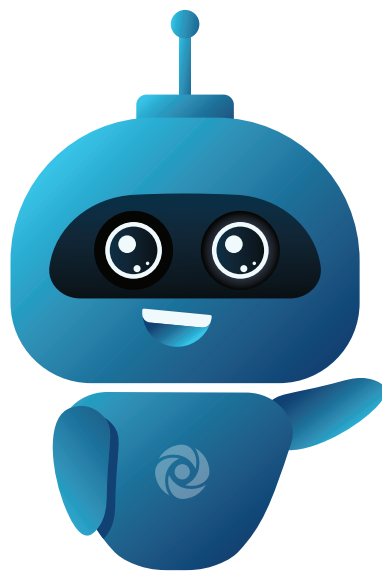


[www.riscogroup.com](http://www.riscogroup.com)

## Discover LightSYS Air, RISCO's most powerful professional wireless system yet.

Designed to address the unique challenges and requirements of installers, LightSYS Air offers an unparalleled level of power and performance.

Experience the power of quick and effortless installation with the new HandyApp Configurator, an intuitive wizard which guides installers through the configuration process.



## Discover the future of wireless security systems with **LightSYS Air**.

LightSYS Air, with its integrated IP and Wi-Fi, offers seamless connectivity and an extended RF range.

With 128 wireless zones and a choice of snow white or midnight black colours, it is the preferred choice for professional installers and users seeking to safeguard residential and commercial sites.

# LightSYS Air

For Professional Security Installers

After conducting extensive research on the needs of professional security installers, we carefully considered this feedback to create a system that offers swift configuration, seamless communication and advanced wireless technology.

Introducing LightSYS Air, the game-changing solution that will revolutionise the industry.



# We heard your problems



## Enhanced RF Range

A significant improvement has been made to the RF range. Even in the most demanding environments, the wireless technology in the system performs optimally and has been designed to be robust and highly reliable.

## Interactive voice technology

Our interactive text-to-speech technology is a groundbreaking cloud-based tool that allows for easy customisation of voice messages. This transformative feature enhances user interaction and convenience, providing you with a significant competitive edge.



## Simplified Installation Process

With LightSYS Air, the process of installation has never been more straightforward. Our novel HandyApp Configurator smartphone app eliminates the complexities of setup, making installation faster and easier than ever before.

## Expanded Zones for Greater Flexibility

LightSYS Air offers remarkable flexibility for residential and commercial installations of any type or size. With up to 128 zones, it caters to a wide range of needs, ensuring optimal performance and adaptability.



## Onboard IP & Wi-Fi

Installers benefit from quick installation and automatic cloud connection with the LightSYS Air integrated IP and Wi-Fi.

# Exclusive Kits & Bundles

In enhancing the LightSYS Air experience, exclusive bundles and kits are available, incorporating RISCO's wireless devices.

This makes any transition highly appealing to both you and your customers, encompassing all potential requirements.



# LightSYS Air

For Homes and Businesses

No wires, no drilling, only the most advanced wireless panel. Designed with style in mind, to fit any environment and space, making it almost invisible while empowering full security



## New colours

Choose from either a snow white or midnight black panel and matching accessories line, allowing the system to blend seamlessly into contemporary environments. Its aesthetic appeal is as impressive as its performance.

## Style Meets Functionality

LightSYS Air offers more than just advanced features. It effortlessly enhances any space with its stylish and contemporary design aesthetics, sure to impress even the most discerning individuals.







## Powerful and fully Wireless

As a fully wireless professional security system, a LightSYS Air system is installed into homes and businesses with minimum fuss – meaning no cables and no drilling.

## Seamless Integrations

Users of LightSYS Air can elevate the security of their homes or businesses by effortlessly integrating devices such as our acclaimed VUpoint video solution and the recently unveiled Video Doorbell.



## One App. Complete Security

Users of every LightSYS Air system enjoy complete peace of mind, with alarm and video contained in a single app to monitor security at any time and from anywhere. All powered through the ultra-secure RISCO Cloud platform.

# Technical specifications

Communication modes (modules)	GSM (4G), IP/WI-FI (built-in)
Wireless zones	128
Frequencies	Wifi 868.65 MHz, Camera 869.525 MHz
System users (user codes)	128 (includes 1 installer, 1 sub-installer, and 1 Grand Master code)
Follow-Me destinations	64
Panel programming options	Keypad (locally), Configuration Software (locally, remotely), HandyApp
Partitions	32
Monitoring station accounts	3
Event log	2000 entries
PIR cameras	32
Sounders (internal/external)	3
Keypads	8
Keyfobs / remote controls	128
SMS for remote operation	Yes
WL Repeater	4
Programmable utility outputs (UO)	Supports up to 4 programmable utility outputs (UOs) Using optional I/O Board
Electrical power requirement	100-240 VAC, 50/60Hz,0.1A Max
AC power supply cord	Diameter 14mm, conduit 16mm Safety-approved, in compliance with IEC 60227
Current consumption (at main panel)	210mA standby
Backup battery (inside main panel)	Li-Polymer rechargeable battery 3.7V,5Ah
Low battery voltage signal	3.3VDC
Humidity range	Average relative humidity of approx. 75%
Operating temperature	-10°C – 55°C (14°F to 131°F)
Dimensions (H x W x D)	197.5 x 152.5 x 52 mm (7.78 x 6 x 2.05 in)
Weight	0.77 kg
Power Output	Security 868.65 MHz, 10 mW Camera 869.525 MHz, 100 mW

## Certifications

